

# CORDLESS DUAL TORCH WELDING TRACTOR

## BEAM RUNNER CDL

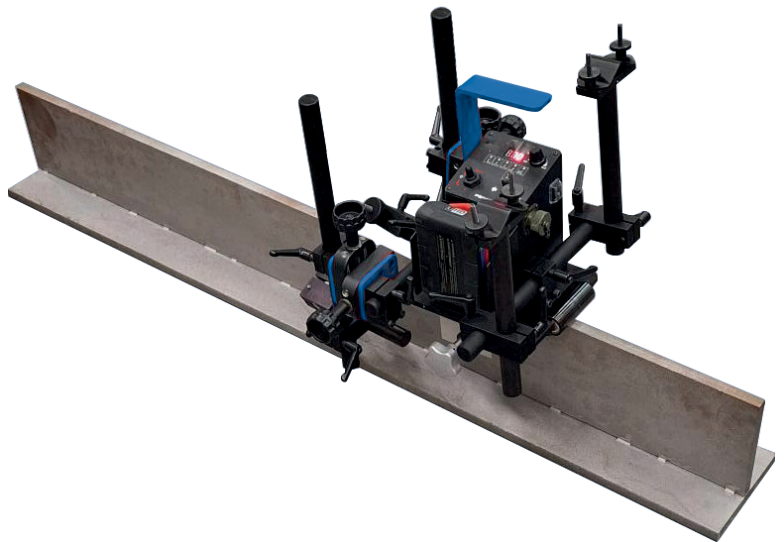
### BATTERY POWERED PROGRAMMABLE WELDING

Meet the Steelmax Beam Runner CDL, the cordless, dual-torch welding tractor built to conquer structural steel. This specialized carriage is engineered for maximum productivity, allowing you to run two MIG/MAG torches simultaneously for continuous or intermittent (stitch) welding. The Beam Runner is trackless run-ning directly on the workpiece. Purposely built for I-beams, H-beams, T-bars, and C-channels, the Beam Runner CDL delivers precise, repeatable results.

The Beam Runner is powered by an 18V LiHD battery system that is interchangeable with your other Steelmax cordless tools. It delivers power for an entire shift without cable clutter and improves worksite safety. With programmable weld paths, skip lengths, and crater filling, this versatile tractor is your all-in-one solution for structural fabrication, beam splitting, and more.

#### Features

- Travels on steel profiles such as flats, angles, I-beams, T-beams, bulb flats and irregularly shaped work pieces with radius down to 160 mm
- Dual-sided operation with two torches in continuous or intermittent welding mode
- Simple and ergonomic programming of weld patterns and stitch welding parameters
- Multi-functional LED display showing travel speed, units, welding settings and diagnostic messages
- 18V DC allows safe use of Beam Runner CDL in harsh environments like shipyards that are often wet, metallic, and confined
- The LiHD battery, supported by intelligent battery management, ensures maximum power availability for an extended period
- Closed-loop speed control system stabilizes travel speed, enabling uniform heat input for consistently high-quality welds



Continuous welding



Stitch welding



Dual torch welding



Dual Arc Ignition



Horizontal speed

5-130 cm/min (2-51 in/min)

# Steelmax.

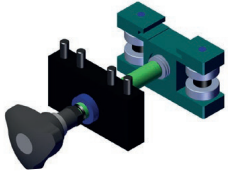
The tools of innovation.

# BEAM RUNNER CDL FROM STEELMAX®

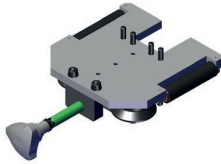
## Types and dimensions of steel profiles suitable for the Beam Runner CDL:

We offer 4 optional clamps to choose from, depending on the type of steel profiles being processed. Optional clamps must be purchased separately. These are not included in the standard shipping set

Clamp for flat profiles  
(option)  
DCS-0824-0037-00-0



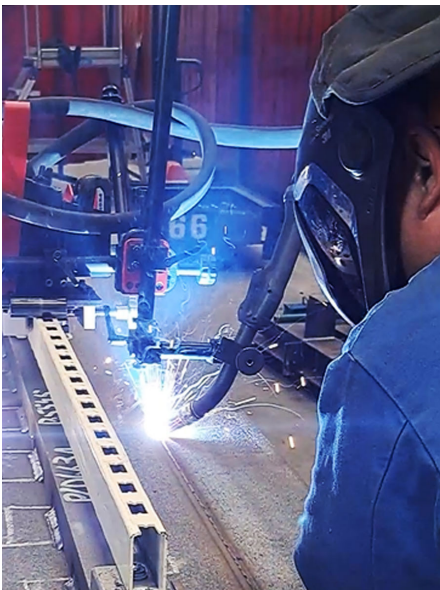
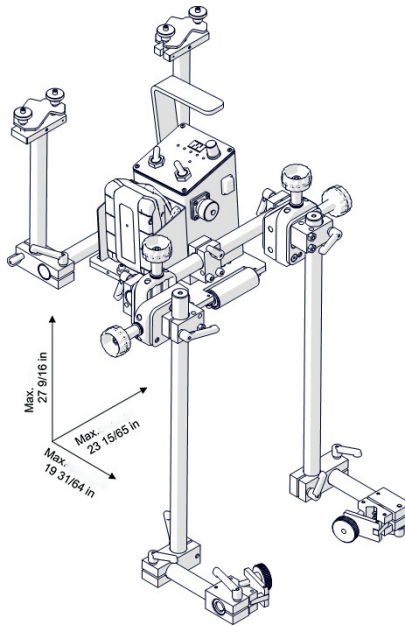
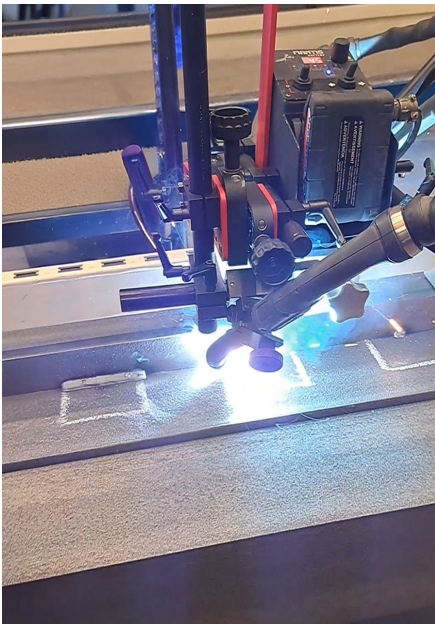
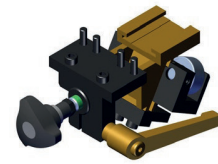
Clamp for T profiles and  
angle profiles (option)  
DCS-0824-0037-01-0



Large clamp for bulb profiles  
200 – 340 mm (option)  
DCS-0824-0037-03-0



Small clamp for bulb profiles  
DCS-0824-0037-02-0



## Beam Runner CDL Technical Specifications

Voltage	18V DC, 4.0 Ah
Power	18 Watts
Horizontal Welding Position	PA / IF / IG PB / 2F
Torch type	MIG/MAG
Torch Diameter Range	5/8" - 7/8" (16 - 22 mm)
Cross Slide Adjustment	0-1 3/8" (0-35 mm)
Horizontal Pulling Force	34 Lbs
Horizontal Speed	0 - 5 in/min (5 - 130 cm/min)
Weight (w/out battery)	15.5 lbs (7 kg)
Part Number	<b>SM-WC-BR-CDL</b>

**Steelmax.**

The tools of innovation.

For ordering and customer service, or to request detailed product information or demonstration videos, contact:

303-690-9146

STEELMAX.COM

sales@Steelmax.com

Fax: 303-690-9172