

HIGH-SPEED PIPE BEVELING SYSTEM FROM STEELMAX®

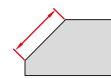
PBM 1000 PIPE BEVELING MACHINE

PRODUCE EFFICIENT AND ACCURATE WELD PREPARATION WITH HIGH-SPEED ROTARY MILLING HEAD WITH REPLACEABLE CUTTING INSERTS FOR LONG-TERM PERFORMANCE

The Steelmax **PBM 1000** is designed for beveling and facing pipes, tanks or tubes with diameters ranging from 8" – 40" (200 mm - 1000 mm). It is capable of machining bevel widths up to 1-3/4" (45 mm) within a range of angles from 0° – 60°. An exclusive "J" groove beveling attachment is also available. With its high-speed rotary milling head, **PBM 1000** produces accurate bevels in a fraction of the time required by traditional single point machining. This saves time and money and improves accuracy.

FEATURES

- Bevel pipe between 8" - 40" diameter
- High-speed rotary milling head with replaceable inserts
- Adjustable bevel angle between 0° - 60°
- J-groove beveling option
- 11-ton capacity
- Powerful 230 Volt 3 PH Motor



Max bevel width 1-3/4"



Min. wall thickness 1/4"



Bevel angle from 0° to 60°



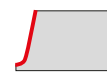
Pipe OD 8"-40"



Facing



Pipe OD beveling



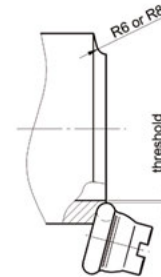
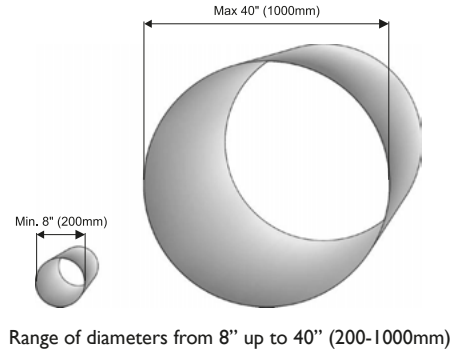
Pipe J-groove beveling

Steelmax®

The tools of innovation.

HIGH-SPEED PIPE BEVELING SYSTEM FROM STEELMAX®

PBM 1000 TECHNICAL SPECIFICATION	
Power supply	1~ 208-230 V, 50/60 Hz 3~ 208-230 V, 50/60 Hz
External pipe diameter range	8" - 40" (200-1000 mm) pipes longer than 830 mm; 8" - 23-5/8" (200-600 mm) pipes of 15-3/4" - 31-11/16" (400-830 mm) length
Maximum allowed pipe weight	13,200 lbs. (6000 kgs) with standard rollers. Up to 22,000 lbs. (10,000 kgs) with optional steel rollers
Min. pipe thickness	3/16" (5 mm)
Pipe fixing	mechanical with chain
Feed rate	4" - 43-5/16" (100-1100 mm/min)
Beveling angle range	0-60° degree continuous angle adjustment
Max OD bevel width	1-3/4" (45 mm)
Beveling type "J"	YES - option
"J" type beveling radius	0.24" (6 mm) or 0.31" (8 mm)



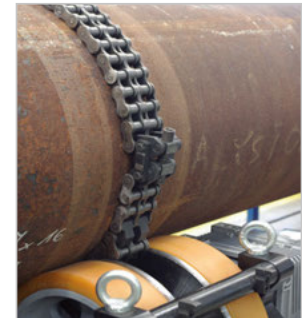
R6 & R8 J-groove available with optional milling heads

Accessories and optional equipment

- SM-GLW-000013 Standard Milling head (7 inserts required)
- SM-PLY-000282 Cutting inserts for beveling
- SM-GLW-000014 J-groove R6 milling head (6 inserts R6 required)
- SM-PLY-000198 Cutting insert for J-groove R6 end preparation
- SM-GLW-000015 J-groove R8 milling head (5 inserts R8 required)
- SM-PLY-000201 Cutting insert for J-groove R8 end preparation
- SM-ZST-0436-25-00-00-0 Stainless Steel Set
- SM-WSP-0436-24-00-00-0 Oval Pipe Tracking Attachment



Clamping device for short pipes of 15-3/4" - 32-11/16" length



Adjustable chain (ø 8" - 40") ensures positive axial rotation



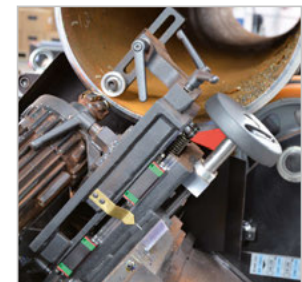
User-friendly control panel



Optional heavy-duty pipe support with 11-ton capacity



Shields and internal lighting increase safety and comfort of the operator



Optional Oval Pipe Tracking Attachment allows out of round pipe beveling

Steelmax
The tools of innovation.

 **American Welding Society**
Supporting Company Member

For ordering and customer service, or to request detailed product information or demonstration videos, contact:



877-833-5629

STEELMAX.COM

sales@Steelmax.com

Fax: 303-690-9172