

# PIPE PROFILE CUTTING MACHINE FROM STEELMAX®

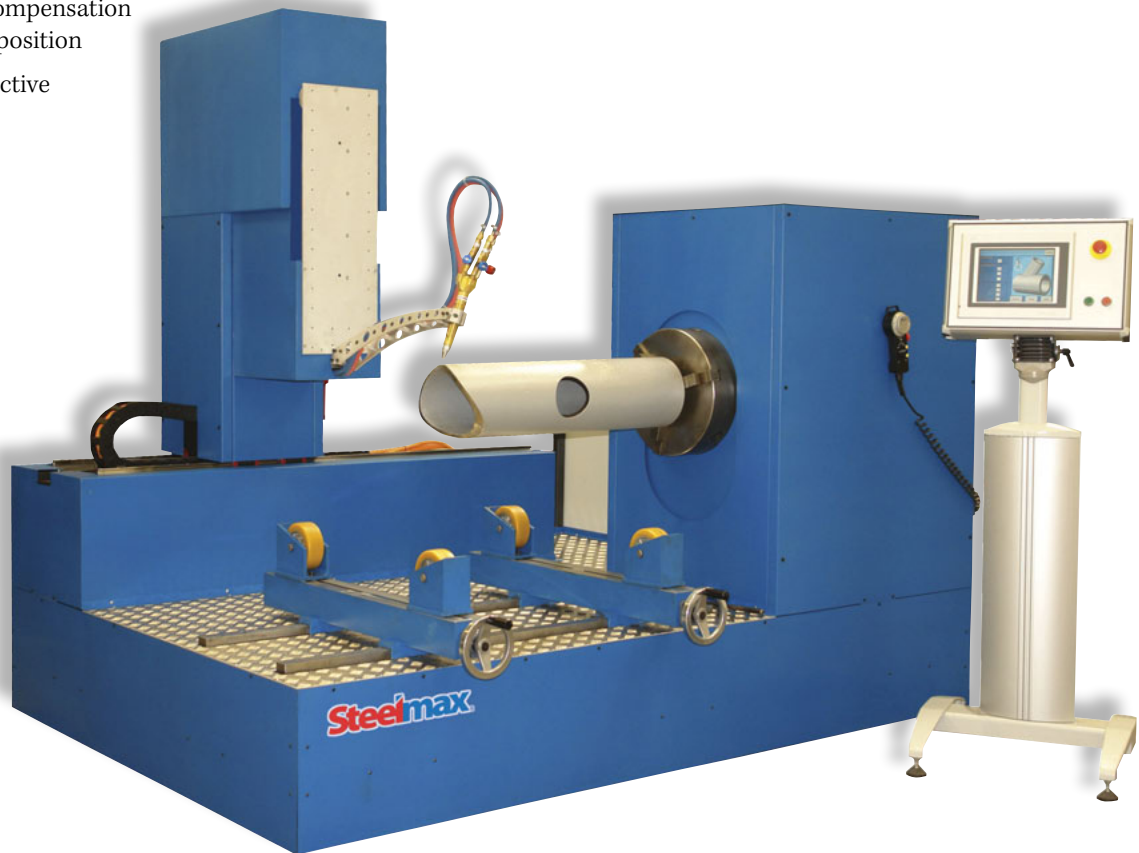
## THE PPCM109

### 4-AXIS CNC CONTROLLED PROFILE CUTTING OF PIPES AND TUBES

The 4-axis CNC controlled **Pipe Profile Cutting Machine** is designed for precise profile cutting of pipes and tubes using oxyfuel or plasma techniques. Advanced design, including servo motors, a CNC controller and high-precision linear guides, enables a fast cutting speed with high quality results. It features user-friendly software which allows for quick learning and efficient use of this machine after limited training.

#### FEATURES

- The PPCM uses an intuitive software package that helps to eliminate operator input errors and increase overall "arc on" time
- Pipe profile cutting and pipe beveling are customizable to customers' needs
- Pipes can be machined at both ends
- Cutting process can be stopped and restarted at any point
- Hole cutting such as rectangle, circle or ellipse
- Rich library of shapes open for extension.
- Length of spatial structural workpieces are determined automatically
- Active compensation of torch position
- Cost effective



**Steelmax**  
The tools of innovation.

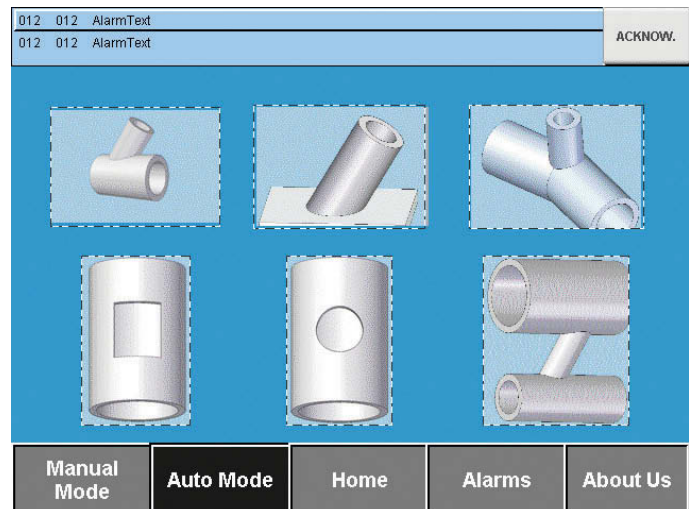
# PIPE PROFILE CUTTING MACHINE FROM STEELMAX®



## Specifications

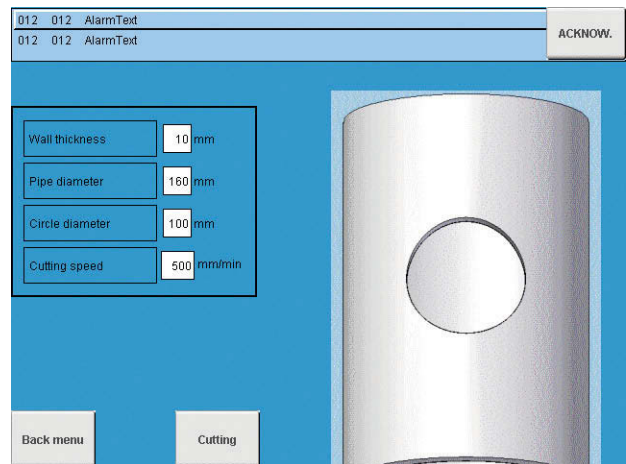
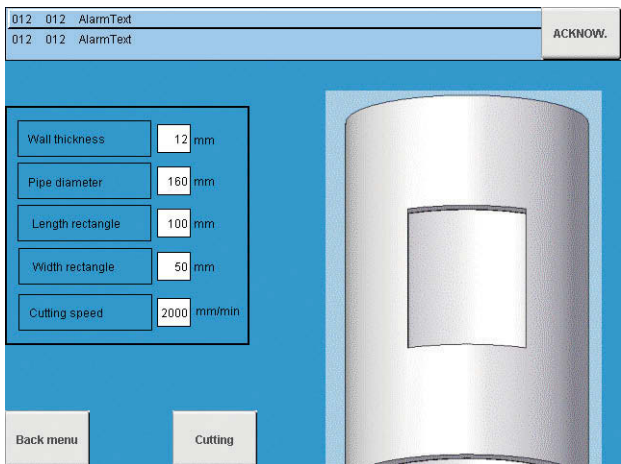
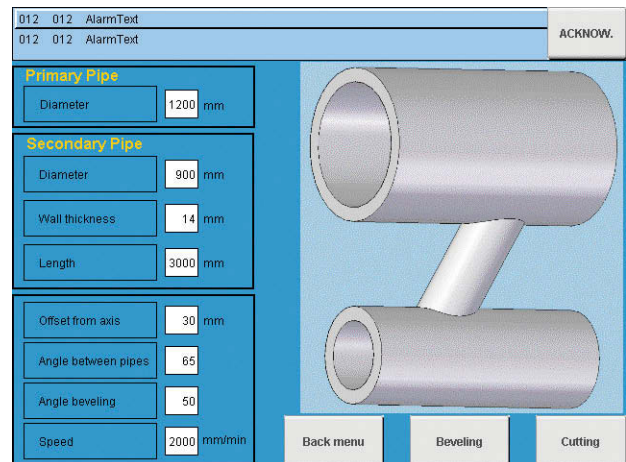
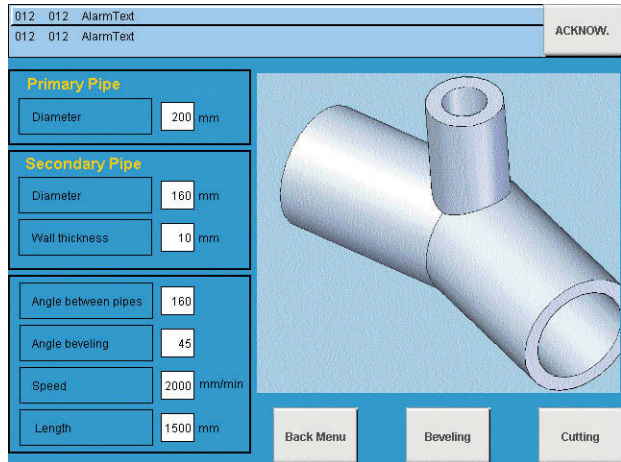
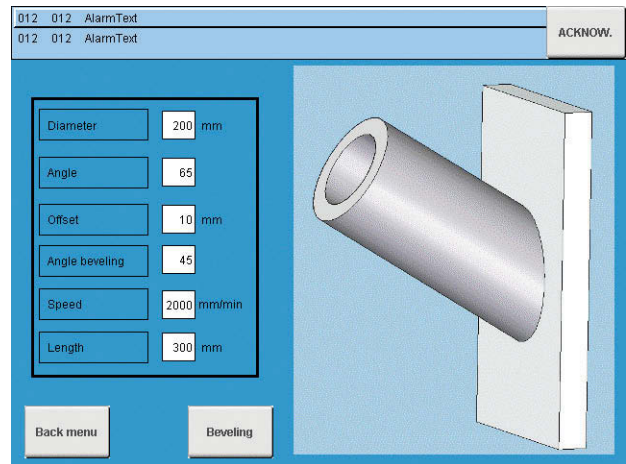
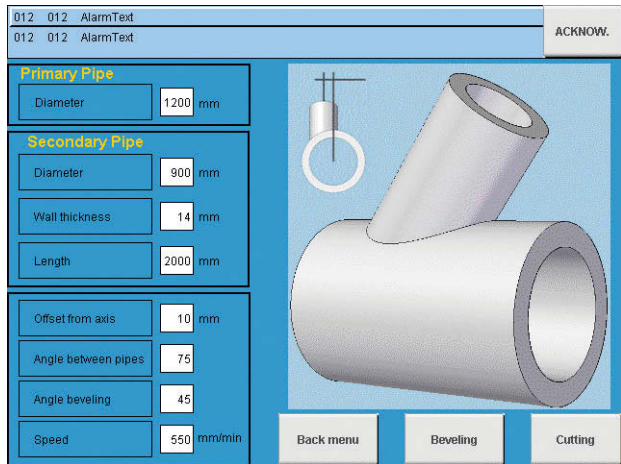
- Requires 3 ph power supply
- 4 axes controlled numerically
- Oxyfuel or plasma cutting
- Maximal pipe length up to 39.4' (12 m)
- Scope of pipe diameters 4-25" (100-640 mm)
- Maximum pipe cutting speed up to 197 in/min (5 m/min)
- Beveling with angles up to 60°
- Touch screen
- Lead in/lead-out optimization
- Automatic speed adjustment
- Self calibrating system

Our latest generation control system permits fast shape programming. Integrated library of macros allows for parametric definition of typical elements. User-friendly interface helps operator to input only the necessary data. Alternatively, the machine can also accept G-CODE format program transferred by operator from an external computer through USB port.



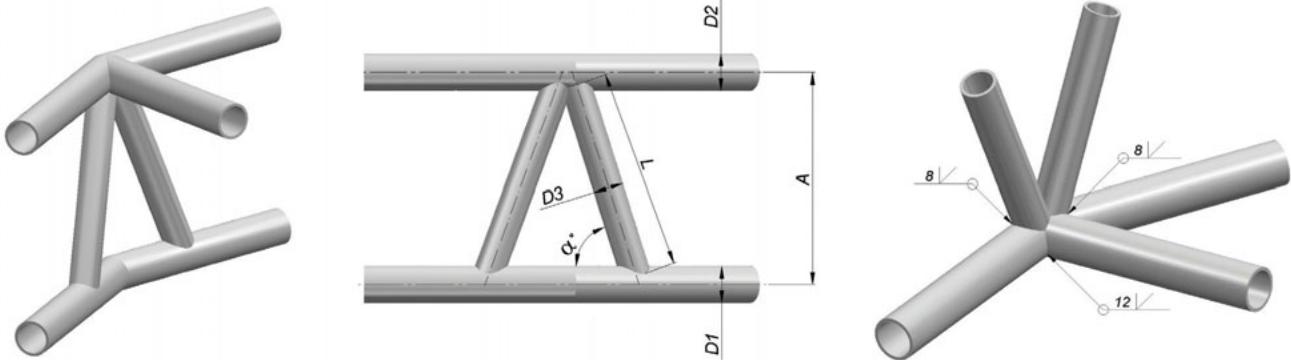
# PIPE PROFILE CUTTING MACHINE FROM STEELMAX®

Screen samples shown below demonstrate the intuitively-designed **PPCM109** software package.

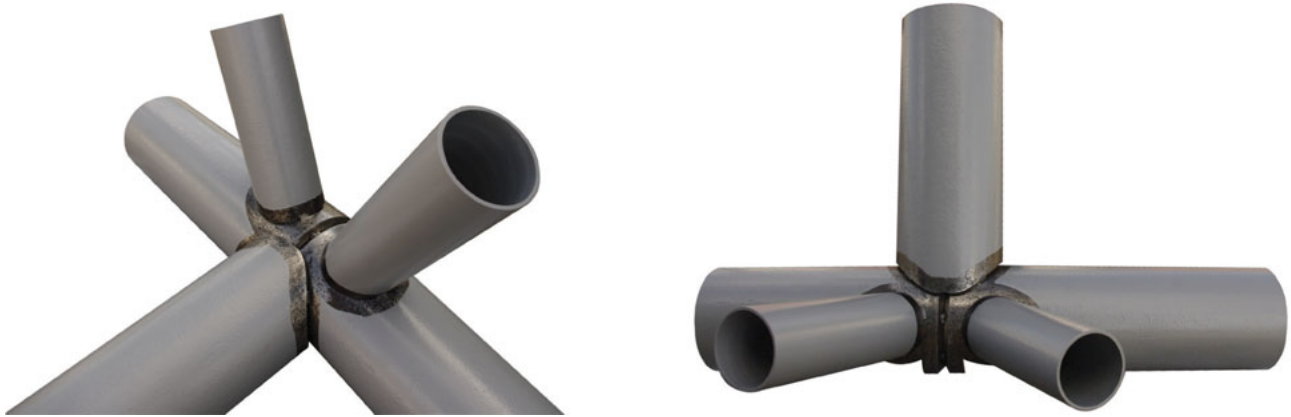


# PIPE PROFILE CUTTING MACHINE FROM STEELMAX®

Samples of structural profiles:



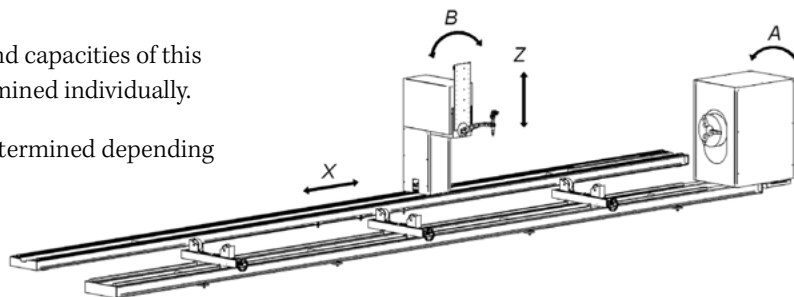
Workpiece length "L" is determined by PPCM automatically as shown below.



**PPCM109** features 4 axes controlled numerically as shown below.

Specific dimensions and capacities of this machine can be determined individually.

Pipe supports to be determined depending on pipe load required.



## Steelmax

The tools of innovation.

6200 S.Troy Circle, Suite 110, Centennial, CO 80111

For ordering and customer service, or to request detailed product information or demonstration videos, contact:

I-87STEELMAX

STEELMAX.COM

sales@Steelmax.com

Fax: 303-690-9172

