

PORTABLE WELDING CARRIAGE

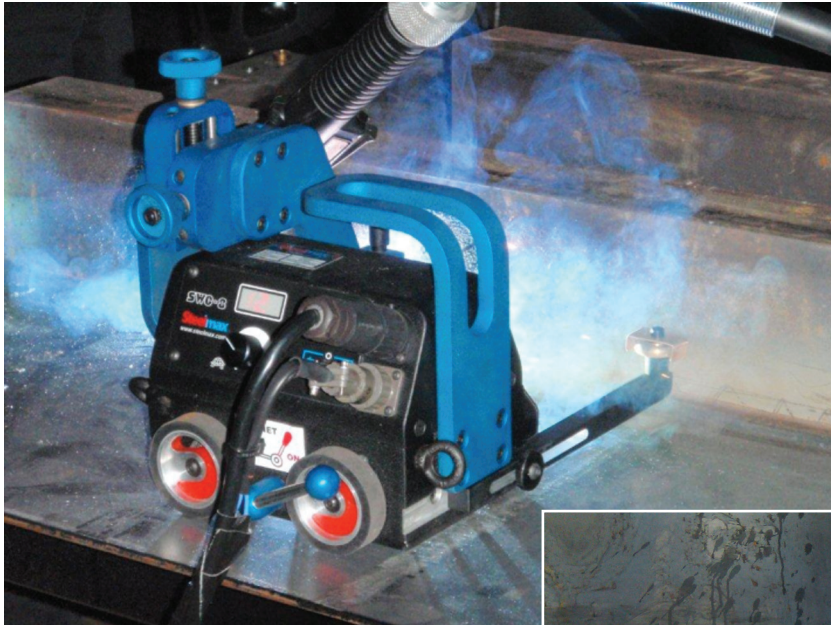
Li'l RUNNER PORTABLE FILLET WELDING CARRIAGE

COMPACT TRACKLESS FILLET WELDING CARRIAGE WITH 4-WHEEL DRIVE MAGNETIC TRACTION

Increase your production and reduce your welding costs with the **Li'l Runner** Automatic Fillet Welder. By providing constant, non-stop travel at a regulated speed, **Li'l Runner** produces consistent high-quality welds in a fraction of the time required by hand welding. The regulated travel speed creates weld bead geometry which is exact to your specifications, reducing costly over welding and decreasing filler metal usage by as much as 60%. **Li'l Runner** will produce quality welds faster and with less cost than hand welding. At just over 17 lbs (8 Kg), this compact, portable tractor can be carried anywhere.

The **Li'l Runner** is available in two unique versions: (i) the standard version (up to 86 IPM) which can be used for cutting and welding applications; and (ii) the dual-power version (battery powered with a line power adapter). The

Li'l Runner family of carriages offer a broad range of capabilities in one of the smallest fillet welders on the market today.



**Li'l
Runner**
by **Steelmax**

Standard kit includes:

- Li'l Runner drive unit (SM-WC-LT)
- Power cord
- Arc control cable
- Guide arm assembly with brass roller wheels

*Also available dual-power
battery-operated models.*



Li'l Runner with flex rail for tank fabrication.

Steelmax
The tools of innovation.

Li'l RUNNER FROM STEELMAX®

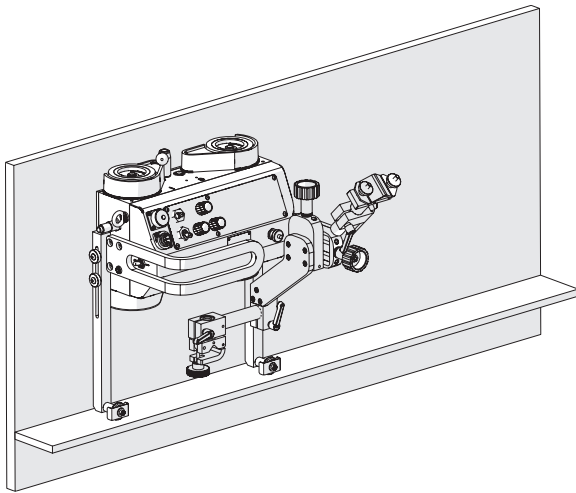
FEATURES

- Compact, lightweight design with durable cast aluminum housing
- Positive magnetic traction permits out of position use
- Magnetic adhesion on/off lever permits easy set up and adjustment on work piece
- Maintenance-free, 4-wheel planetary gear drive system
- Digital LED display for setting travel speed
- Rapid clamp torch holder mechanism for different types of MIG/MAG torches
- Precise cross-slide torch adjustment
- Integrated automatic arc initiation
- Self-guiding roller arms eliminate the need for track

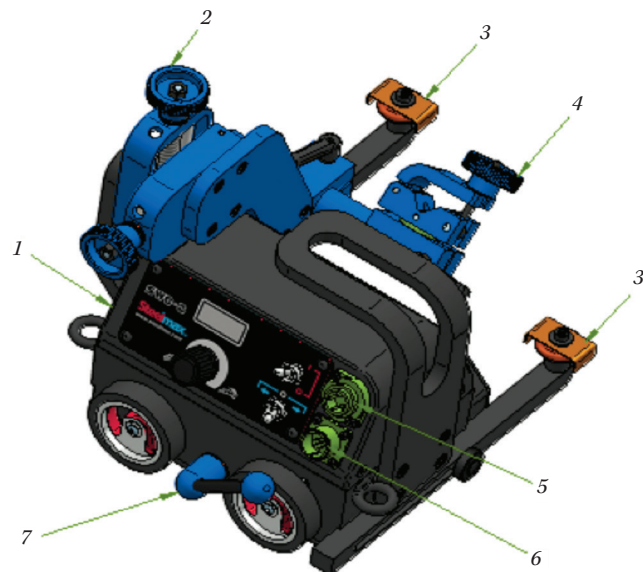


PRIMARY BENEFITS

- Increased arc time – no starts and stops
- Reduce wasted filler metal – eliminate over welding
- Consistent heat input reduces distortion
- Precise travel speed and torch angle reduces weld defects and costly rework
- Improves work environment – reduces fatigue and repetitive stress – removes operator from heat and fumes



The Li'l Runner is able to run on a vertical piece of steel.



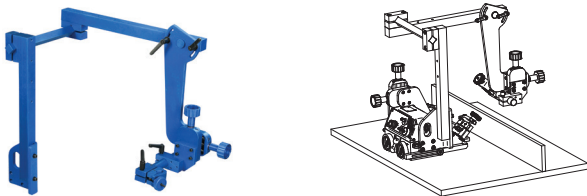
1. Drive unit with control panel
2. Cross slide assembly
3. Guide arm assembly with brass roller wheel
4. Quick release torch holder (optional accessory)
5. Power supply socket
6. Arc control cable socket
7. Magnet release lever

PORTABLE WELDING CARRIAGE

OPTIONAL ACCESSORIES:

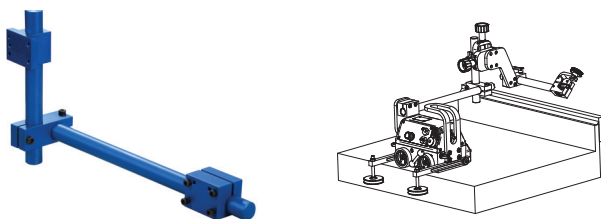
1. Dual Torch Mount

enables mounting of second torch for double-sided fillet welding
Product Code: SM-PDT-0466-40-00-00-0



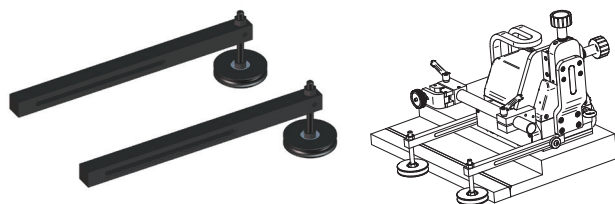
2. Torch Extension Arm

enables extended reach for torch placement
Product Code: SM-PRD-0466-43-00-00-0



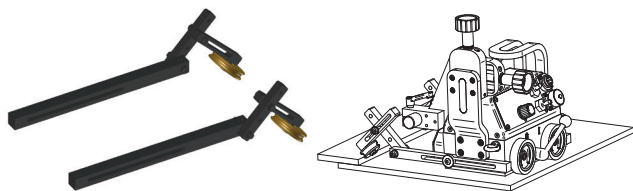
3. Edge Following Guide Arms

enables guiding off an outside edge
Product Code: SM-PRW-0466-41-00-00-1



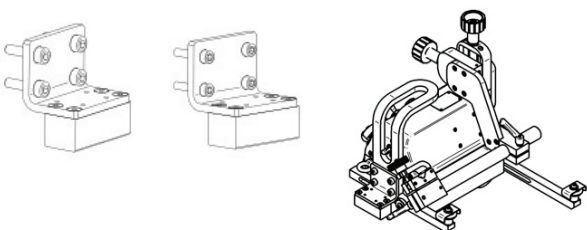
4. Adjustable Guide Arms

enables guiding on lap joints and templates
Product Code: SM-PRW-0466-42-00-00-1



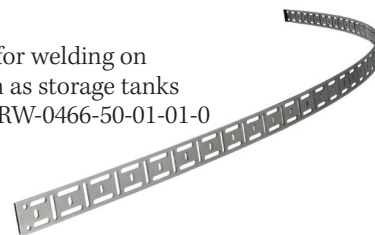
5. Auxiliary Magnet Blocks

provides additional holding power for out-of-position welding with heavy torch loads
Left - Product Code: SM-BLO-0466-44-01-00-0
Right - Product Code: SM-BLO-0466-45-01-00-0



6. Flexible Guide Rail

72" long flexible rail for welding on curved surfaces such as storage tanks
Product Code: SM-PRW-0466-50-01-01-0



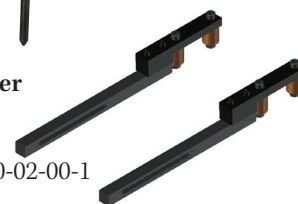
7. Flexible Guide Rail Alignment Tool

quickly aligns the flexible guide rail to the appropriate distance from the joint
Product Code: SM-UST-0466-53-00-00-0



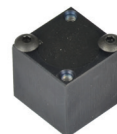
8. Rail Guide Arms for Li'l Runner (set of 2)

for use with flexible guide rail
Product Code: SM-PRW-0466-50-02-00-1



9. Magnet for Flex Rail

used to attach flexible guide rail to curved surfaces.
10 required per rail section
Product Code: SM-BLO-0466-50-01-10-0



10. Quick Connect Torch Holder

quick connect/release torch holder
Product Code: SM-ZRZ-0466-04-01-00-0



11. Magnet Guide Arms for Li'l Runner (set of 2)

enables guiding on overhead profiles and permits bi-directional movement
Product Code: SM-PRW-0466-52-00-00-1



12. Low Guide Arms for Li'l Runner (set of 2)

enables guiding on short profiles and edges
Product Code: SM-PRW-0466-65-00-00-1



13. High Guide Arms for Li'l Runner (set of 2)

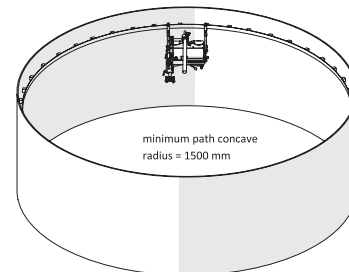
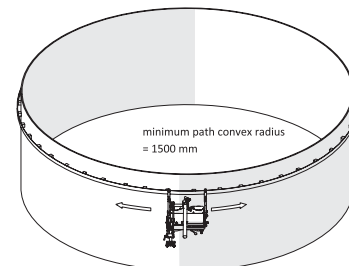
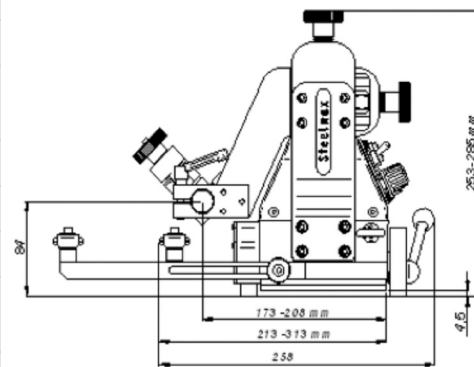
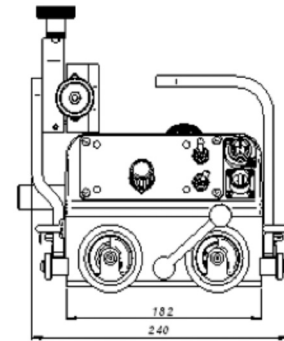
enables guiding on plates and stiffeners with cut outs and holes
Product Code: SM-PRW-0466-66-00-00-1



Li'l Runner FROM STEELMAX®

Li'l Runner Technical Specifications

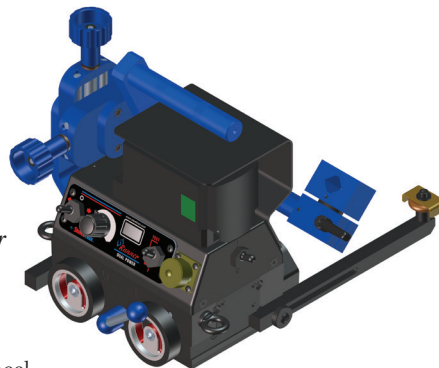
Part Number	SM-WC-LR-HS (High-Speed) SM-WC-LR-DP (Dual-Power)	
Power supply	Dual Voltage 120 or 230V	
Welding position	Vertical/Horizontal	
Minimum material thickness	5/32" (4 mm)	
Chassis to material clearance	5/32" (4 mm)	
Travel mechanism	Friction drive with worm gear reduction	
	Four wheel drive, heat resistant silicone wheels	
Tracking method	2 guide rollers	
Pulling power	22 lbs (10 kg) Vertical 33 lbs (15 kg) Horizontal	
Cross slide adjustment:	Up-Down	1.4" (35 mm)
	Left-Right	1.4" (35 mm)
Guide roller adjustment	4" (100 mm)	
Control panel:	Arc Ignition Switch	Power supply On/Off
	Travel Direction Switch	Start Left, Stop, Start Right
	Li'l Runner HS Speed (IPM) Range	Horiz: 0 - 86.6"/min (0-2199 mm/min)
Dimensions (L x W x H)	9.6 x 10 x 9.5" (240 x 258 x 253 mm)	
Weight	17.5 lbs (8 kg)	



Li'l Runner DP

Standard kit includes:

- Drive unit (SM-WC-LR-DP)
Dual-power, battery-operated Li'l Runner
- Battery
- Charger
- Arc control cable
- Guide arm assembly with brass roller wheel



Steelmax

The tools of innovation.

For ordering and customer service, or to request detailed product information or demonstration videos, contact:

